

Stays in Erasmus+ Countries and in Switzerland (SEMP)

*Information Event for Students of
Sports and Health Sciences*

München, 12. November 2025



Why go abroad?



Exchange and Funding Opportunities

Exchange Programs

- **TUMexchange**

TUM-wide Program for non-European countries

Application Deadline: end of October

- **Erasmus und SEMP**

Partner Universities by School/Department

European countries (except the UK) and Switzerland

Application and nomination via the Schools/Departments

Short-term / Online Programs

- **Online courses from the Norwegian School of Sport Sciences**
- **Blended Intensive Programs**
- **Online courses from the EuroTeQ catalog**
- **ATHENS**

ggf. funding for face-to-face courses may be available through Erasmus+

Self-Organized Stays

- **Thesis**
- **Freemover Stays**
- **Internships**

ggf. funding via PROMOS or Erasmus+ may be available

What is Erasmus+ / SEMP all about?

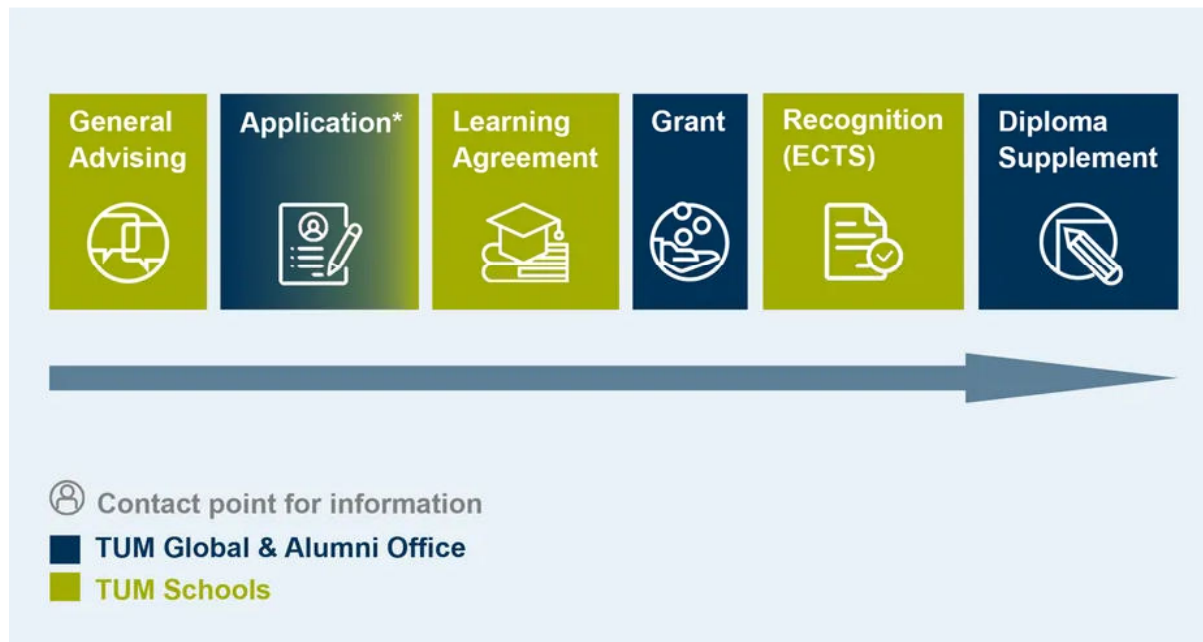
Erasmus / SEMP means:

- Waiver of tuition fees
- administrative, academic, linguistic, social, and cultural support
- Mobility grants
- Usually nomination for one semester only

Erasmus / SEMP does not mean:

- Automatic recognition of academic achievements
- No administrative hurdles / everything is organized for you
- You don't have to study seriously > successfully completed 10 ECTS required to receive the Erasmus+ scholarship, approx. 15-20 ECTS recommended

Division of responsibilities for Erasmus+ (and SEMP*)



* SEMP: TUM G&A is not responsible for the scholarship

Prerequisites

- enrollment at TUM throughout entire period
- Completion of first year of study at the time of the stay abroad

The best time to go abroad is during the final semesters of your studies, as the curriculum offers more elective modules at this stage. Theses can also be written abroad.

- Stay only at universities that have an ERASMUS/SEMP agreement in our department (see partner universities [Partneruniversitäten](#))
- No TUMexchange spot for the intended semester
- Knowledge of the language of instruction and, ideally, also of the national language
- Be independent, flexible, and open-minded
- Have earned at least 20 ECTS credits per past semester of study

Partner Universities

What factors play a role in choosing a university?

- Language skills (B2 recommended for the language of instruction, even if only B1 is officially required)
- Course offerings (refer to the previous year's offerings)
- Semester dates (some of which differ significantly from the TUM calendar!) and study organization
- Regional cost of living
- Personal preferences regarding city size, climate, season, etc.

Number of universities when applying

- A maximum of four universities
- As your first choices may not be possible, you should list four.
- Only list the universities that are listed on our website in the application form!

Application procedure (Erasmus+ and SEMP)

- **Application Phase:**

1. December 2025 to 13. January 2026, 12:00 noon

Don't wait until the last minute! (Technical problems and portal overload are possible)

Application deadline applies to stays in the 2026-27 Winter Semester and the 2027 Summer Semester!

- **Application Portal:**

Please ONLY use the Move On form “*Application for Erasmus+ SMS, Switzerland, Double Degree and Departmental Program 2026/27.*”

Link at: <https://www.international.tum.de/global/erasmusstudium/#c12356>

Single sign on – Registration with TUM ID

Application Documents

1. Letter of Motivation

- Refer to all your preferred partner universities!
- Explain why you chose these universities, how you determined your university ranking, and why you are the best candidate, etc.

2. Curriculum vitae (CV)

- Include all relevant information about your personal, school, and university background

3. Language Certificates

- Usually only B1 required – but higher (at least B2) is better!
- Language certificates from the TUM Language Center, the DAAD, language institutes, high school diplomas
- Complete a basic course in the local language before starting your study abroad program

Application Documents

4. TUMonline grade report or Transcript of Records for completed degree programs

5. Preliminary Study Plans for all desired stays

- Template available [on the TUM G&A website](#)
- Links to partner universities' course offerings (where available) at <https://go.tum.de/191540>
- Base your decision on last year's offerings – be flexible – offerings often change
- Enroll in 15 to 20 credits at the host university (for Erasmus scholarships, earn at least 10 ECTS)
- 60% of ECTS at the partner school/department/faculty (Erasmus partners are not the entire partner university, but only the relevant department).

➤ **Only complete applications will be considered!**

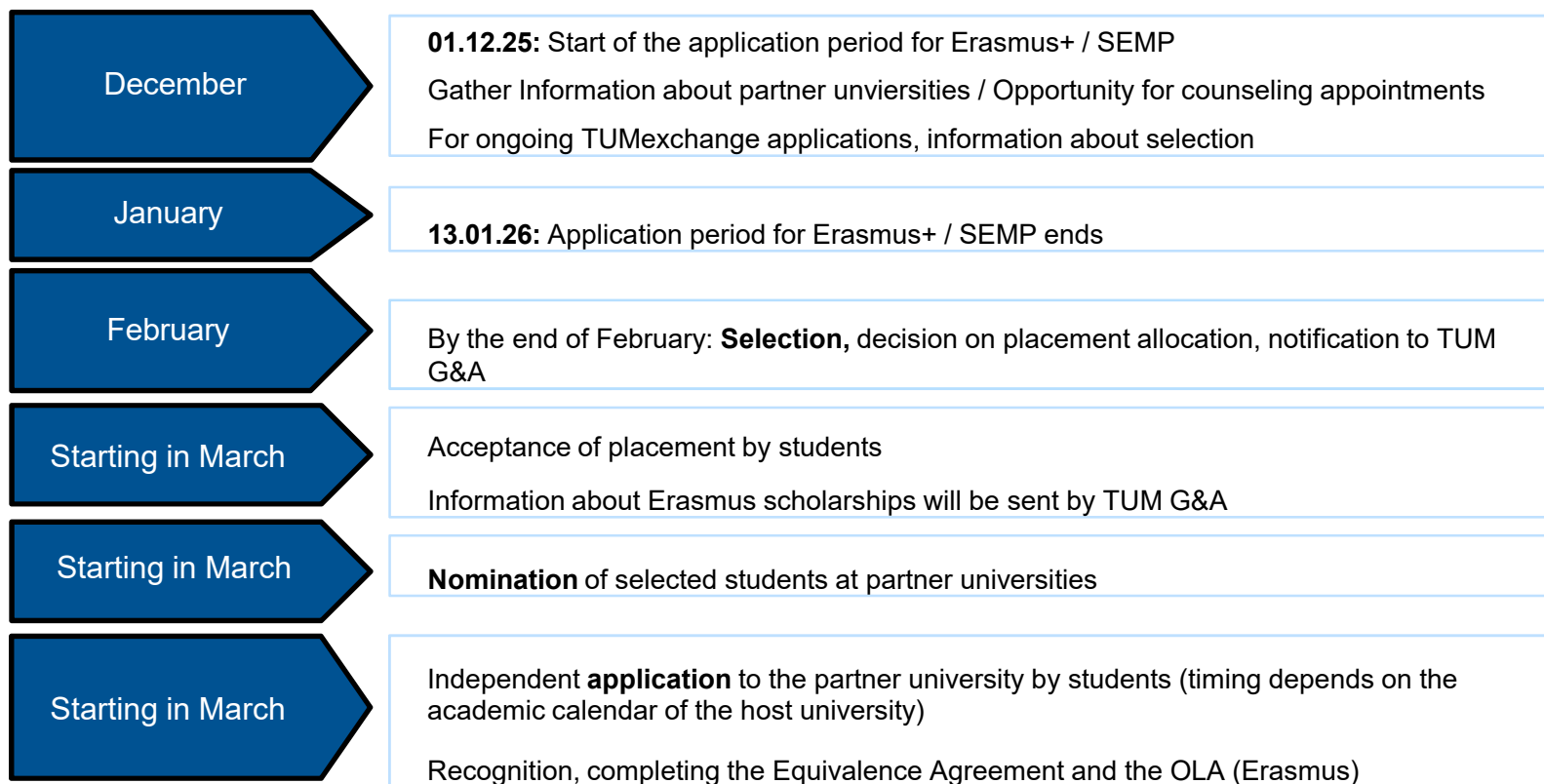
Criteria for allocating spots

- Professional and personal motivation
- Language skills
- Academic record (grades, number of credits)
- Plans to study abroad
- Application documents (completeness, content, form)
- Volunteering in an international/intercultural field

What do we expect from you?

- **Represent TUM appropriately**
 - Give your best academically
 - Participate in study abroad fairs or similar events (incoming-outgoing balance!)
- **Share your experiences after returning**
 - Upload your experience report to the TUM G&A After Mobility Form
 - Or create short videos for Moodle courses

Schedule



Recognition



- **Two basic options:**
 - *Recognition in elective areas*
 - Possible if the foreign module meets the requirements of the degree program and is relevant to the course content
 - Elective areas exist in all degree programs in Sport and Health Sciences
 - *Equivalence with a TUM module (1:1 recognition)*
 - The learning outcomes/skills acquired abroad must not differ significantly from those of the TUM module = learning outcomes and workload should overlap
- The possibility of recognition must be checked before completing the online learning agreement (send module descriptions and completed equivalence agreement)
- Online meeting on recognition and OLA, scheduled around March/April 2026

Internships

Funding for internships with Erasmus+ SMP:

- EU member states + Turkey, Iceland, Croatia, Norway, Liechtenstein (“program countries”)
- All others (including the UK and Switzerland) = “Erasmus+ partner countries”

What types of internships are supported?

- Full-time internships of at least 35 hours per week (voluntary or mandatory internships)
- Types of internships: Internships in companies and universities / practice-oriented final theses or semester projects
- Must be relevant to the degree program
- Funding is also possible for “graduate internships”! (Enrollment at TUM at the time of application / internship must take place within one year of graduation)

Internships

Duration:

- Internship must last **at least 60 days** and up to a maximum of twelve months
(12 months of Erasmus eligibility per study phase (Bachelor, Master, Doctoral))

Amount of Funding:

- Basic funding amount → see here: <https://www.international.tum.de/global/erasmuspraktika/>
- Green travel: Subsidies available for travel by bus, train, or carpool
- Special funding available for specific groups of students

Internships



Here's how it works:

- Students are responsible for finding their own internship
- Fill out and sign the Learning Agreement (must be signed by the student, the host organization, School's Exchange Coordinator)
- Apply online via MoveON (Link on the TUM G&A page) + E-Mail to program manager
 - **Deadline for Internships in Program Countries:**
Submit your complete MoveON application no later than 4 weeks before the start of the internship
 - **Deadline for Internships in Partner Countries:**
Submit your complete MoveON application no later than 2 months before the start of the internship (please note: limited funds available)
- Approval by the TUM Global & Alumni Office
- Complete the remaining steps to receive the first scholarship installment
- After internship, upload the final documents to MoveON to receive the second installment

Short-term / Online Programs

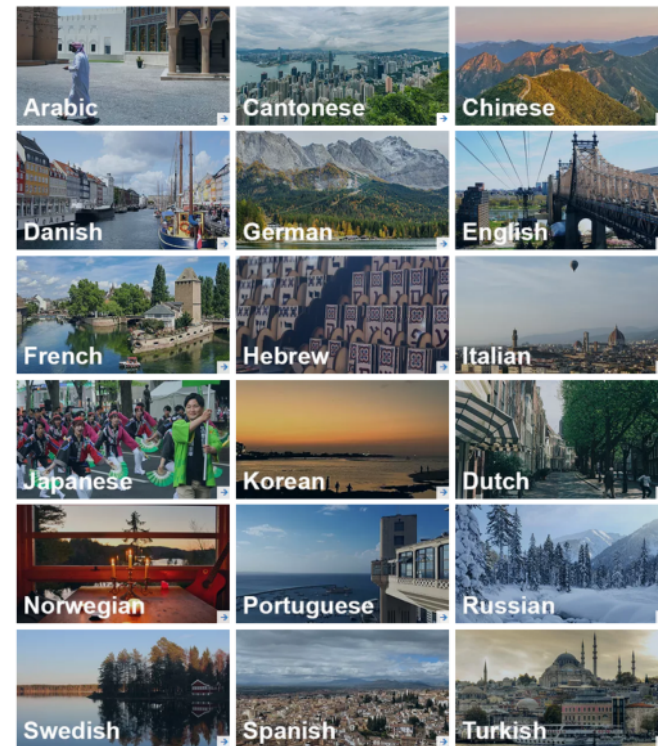
- **EuroTeQ Network:**
Online-, Hybrid- or Blended-Learning courses from CTU, DTU, EPFL, L'X, TalTech, Technion and TU/e – application via TUM G&A twice a year
- **ATHENS Network:**
One-week on-site courses at 24 technical universities in Europe – application via TUM G&A twice a year
- **Norwegian School of Sport Sciences:**
Online Courses – Application via School (twice a year)(Info via Website/Moodle Course)
- **„Erasmus BIPs“ (Blended Intensive Programs)**
One-week blended learning courses - Application via School or participating chairs (information via website/Moodle course) (irregular offering)

More information and links to the programs at:



Offers from the Language Center

- Courses in 18 languages
- Free of charge for TUM students
- Courses offered during the semester and block courses during semester break
- TUMtandem-Program for networking language learners
- Writing assistance in English and German („Writing Center“)
- Courses on intercultural communication
- Exams and DAAD Certificates
- <https://www.sprachenzentrum.tum.de/en/sz/languages/>



Where to find Information

- Website of the Department of Sport and Health on Erasmus+ and SEMP:
<https://www.mh.tum.de/en/mh/academic-programs/sport-and-health-sciences-programs/students/international-office/erasmus/>
- TUM Global & Alumni G&A websites:
<https://www.international.tum.de/en/global/erasmusstudies/>
<https://www.international.tum.de/en/global/studyabroad/studying-in-switzerland/>
- Websites of partner universities and reports from previous outgoing students, links available at:
<https://www.mh.tum.de/en/mh/academic-programs/sport-and-health-sciences-programs/students/international-office/partner-universities/>
- Current incoming students (Contact via V. Lechevallier)
- Participation in events organized by [International Campus Life](#) and [TUMi](#)

Additionally:

For updates, reminders, deadlines, etc.:

Moodle Course „Study Abroad“



Contact:

Valérie Lechevallier
international.sh.sto@mh.tum.de

*Appointments for consultation
 (until 22/12/25) can be booked
 online*